

Elements

TOOLS & METHODS

- > Extensive data gathering and survey
- > Debates on transit-oriented development
- > Lectures
- > SprintCity 1.2 simulation software
- > Co-productions with private companies, knowledge institutes and stakeholders

RESULTS

- > Reports and scientific publications
- > Enhanced collaboration among participants
- > Over 30 SprintCity simulation sessions
- > Participation from 5 provinces, 6 city regions, and 14 municipalities
- > SprintCity simulation tool adopted by two provinces

NEXT STEPS

- > Transit-oriented development policy generation
- > Cooperation among provinces, municipalities, developers, and transit companies
- > Extended application to international cases
- > Advanced technological development for SprintCity 2.0

PARTICIPATE

- > **Apply SprintCity in your region**
- > **Become a collaborating knowledge institute or planning professional in the SprintCity team**

Partnership

SprintCity is an initiative of the Deltametropolis Association, based in The Netherlands. Production of the simulation software, research, and the stakeholder gaming sessions would not be successful without the hard work of our team of experts.

CO-PRODUCERS

- > Movares
- > Delft University of Technology, CPS

KNOWLEDGE PARTNERS

- > Municipalities (14)
- > Provinces (5)
- > City Regions (6)
- > Dutch Ministry of Infrastructure & the Environment
- > NS Dutch Railways
- > Delft University of Technology
- > University of Amsterdam
- > VU University Amsterdam
- > ProRail
- > OV-Bureau Randstad
- > Hong Kong University
- > Curtin University Perth

SPONSORS

- > Next Generation Infrastructures
- > Stedenbaan Plus
- > NS Dutch Railways
- > APPM consultants

CONNECT

- > twitter.com/deltametropool (#SprintStad)
- > nl.linkedin.com/in/deltametropool
- > www.sprintcity.nl
- > sprintstad@deltametropool.nl



SprintCity

A PLANNING SUPPORT TOOL

PROMOTE

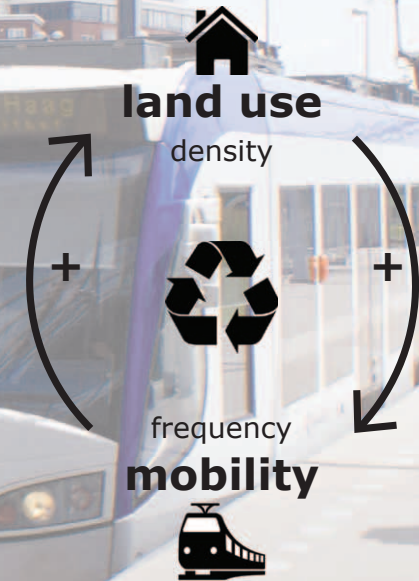
transit-oriented development

INVESTIGATE

interaction between mobility and spatial development

IMPROVE

coordination and collaboration among various stakeholders



SUMMARY

A high-frequency public transport rail system, the Sprinter, interconnects the Randstad region of The Netherlands (Amsterdam, Rotterdam, the Hague, and Utrecht). SprintCity is an ongoing research project and planning support tool, investigating the dynamic interaction between mobility and land use around both urban and suburban stations and offering a unique perspective into future development, job growth, and land use capacity. The tool is now ready for use in other metropolitan areas as well.

Indicators

Survey

Simulation

/ SOCIOECONOMIC
 population density, employment, real estate market



/ SPATIAL
 land use, building density, types of living environments

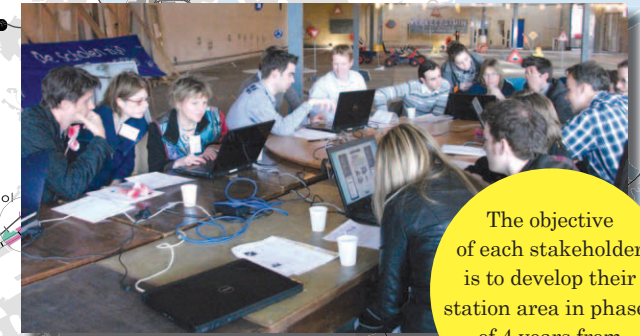
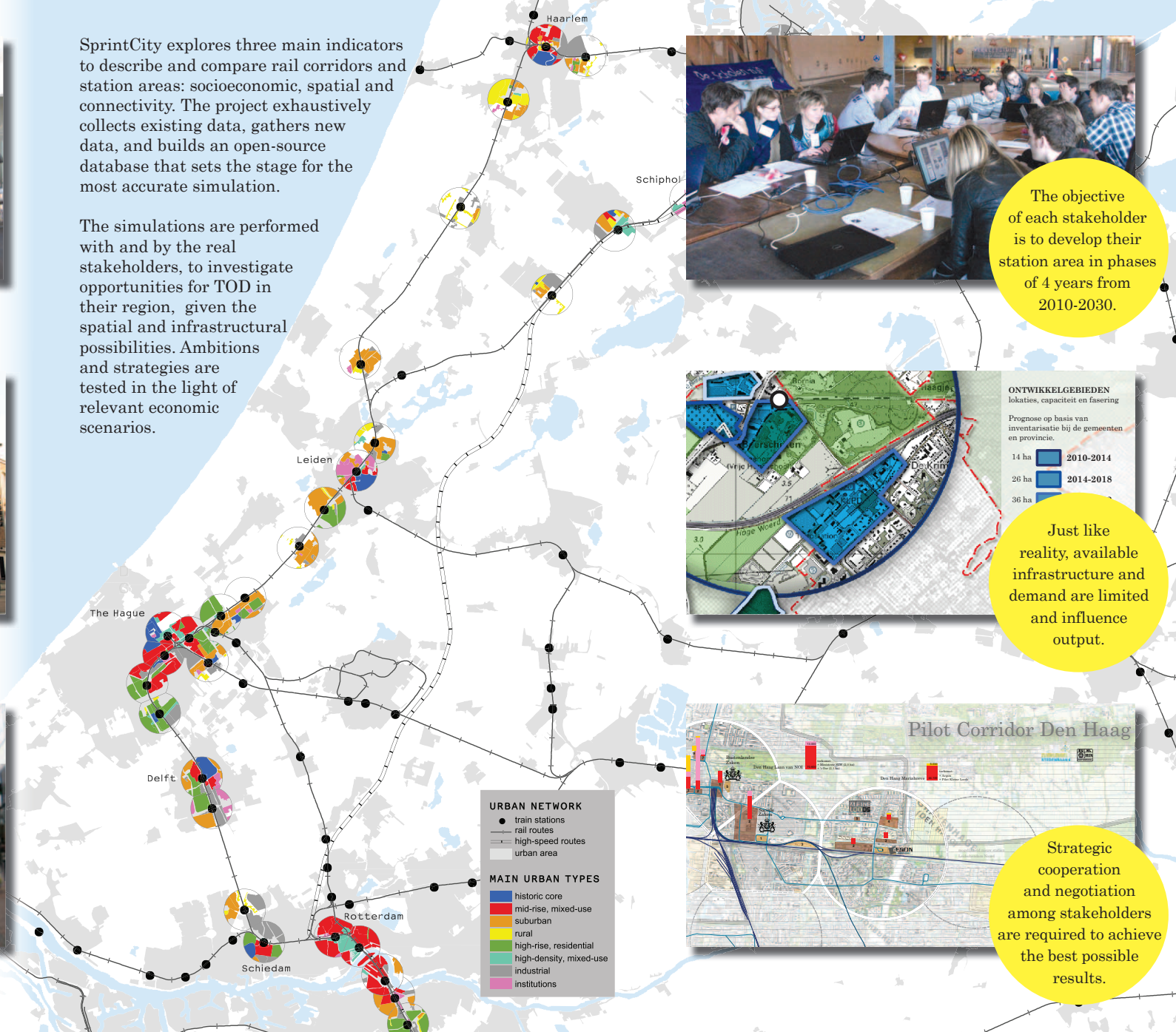


/ CONNECTIVITY
 connections to other modes of transit, levels of service

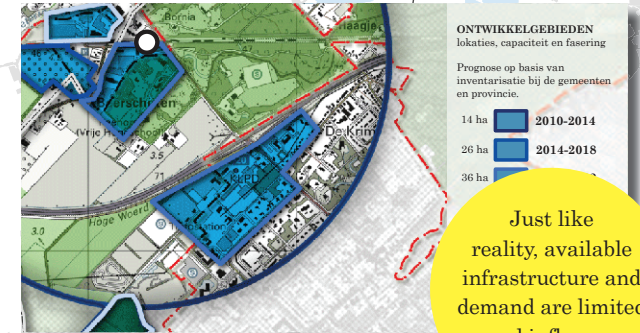


SprintCity explores three main indicators to describe and compare rail corridors and station areas: socioeconomic, spatial and connectivity. The project exhaustively collects existing data, gathers new data, and builds an open-source database that sets the stage for the most accurate simulation.

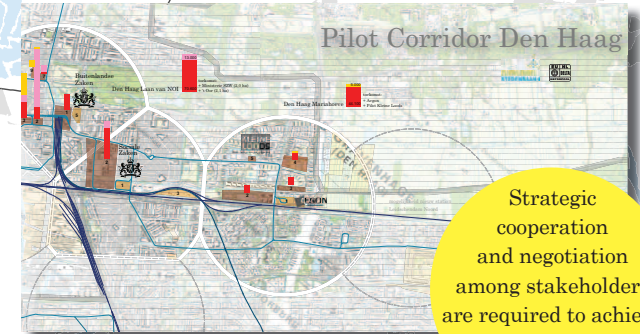
The simulations are performed with and by the real stakeholders, to investigate opportunities for TOD in their region, given the spatial and infrastructural possibilities. Ambitions and strategies are tested in the light of relevant economic scenarios.



The objective of each stakeholder is to develop their station area in phases of 4 years from 2010-2030.



Just like reality, available infrastructure and demand are limited and influence output.



Strategic cooperation and negotiation among stakeholders are required to achieve the best possible results.